

# APPENDIX

APPENDIX	TITLE	PAGE NO.
1	Nomination Document .....	A-1
2	Name Change Approval.....	A-3
3	Detailed Maps of Delaware's Bayshore Byway.....	A-7
4	Institutional Survey of Significant Planning Documents.....	A-29



# Delaware's Bayshore Byway APPENDIX



# APPENDIX 1

## NOMINATION DOCUMENT

In 2007, the Nomination Document for the Route 9 Coastal Heritage Scenic Byway was submitted to DelDOT to be designated as a Delaware Scenic and Historic Highway. The nomination document is appended to this Corridor Management Plan as it provides supplemental information germane to the management plan. In particular, the document includes a detailed listing of historical and cultural resources.

The Nomination Document is available on the website of Delaware Greenways, [www.delawaregreenways.org](http://www.delawaregreenways.org) or by contacting Delaware Greenways directly at 302-655-7275 or by email at [greenways@delawaregreenways.org](mailto:greenways@delawaregreenways.org).



# Delaware's Bayshore Byway APPENDIX



## APPENDIX 2

# NAME CHANGE APPROVAL

On June 4, 2013 at their meeting, the Planning Advisory Committee recommended to the Secretary of Transportation that the name of the Byway be changed from the Route 9 Coastal Heritage Byway to Delaware's Bayshore Byway. The following excerpt from the minutes of that meeting describe the reasons:

*"Byway Name Change*

- a. *Because of the potential extensions of the Byway to Lewes and to New Jersey, the relationship of the Byway to Delaware's Bayshore Initiative and the concept of the Discovery Zones, a discussion ensued whether it would be appropriate to change the name of the Byway from the Route 9 Coastal Heritage Byway to another name.*
- b. *The candidate names follow (no other names were considered):*
  - i. *Delaware's Bayshore Byway*
  - ii. *Delaware's Bayshore Heritage Byway*
  - iii. *The Bayshore Byway*
  - iv. *The Route 9 Bayshore Byway*
- c. *After some discussion, changing the name to Delaware's Bayshore Byway was put into a motion by Cindy Small. The motion passed unanimously.*

*Ann Gravatt will ensure that this change is properly communicated in DelDOT."*

The approval of the Secretary of Transportation follows.



# Delaware's Bayshore Byway APPENDIX





STATE OF DELAWARE  
DEPARTMENT OF TRANSPORTATION  
800 BAY ROAD  
P.O. Box 778  
DOVER, DELAWARE 19903

SHAILEN P. BHATT  
SECRETARY

**MEMORANDUM**

**TO:** Shailen Bhatt, Secretary

**VIA:** Drew A. Boyce, Director of Planning *DAB*

**VIA:** Bobbie Geier, Assistant Director of Planning *BG*

**FROM:** Ann Gravatt, Byways Coordinator *AG*

**DATE:** June 11, 2013

**SUBJECT:** **Route 9 Coastal Heritage Byway**  
**Name change approval to Delaware's Bayshore Byway**

---

On behalf of the Route 9 Coastal Heritage Byway Project Advisory Committee (PAC) and with concurrence from FHWA, we are submitting for approval a formal name change of the byway to *Delaware's Bayshore Byway*. A unanimous vote on the name change was made at the last PAC meeting held on June 4, 2013. Prior to the vote, the name change was subjected to a public review process.

The new name will be used for the Final Corridor Management Plan, due at the end of summer.

**APPROVED:**

\_\_\_\_\_  
Shailen Bhatt, Secretary

\_\_\_\_\_  
Date

*6/20/13*

AG: lc  
Enclosure

cc: Advisory Board Members  
Nick Blendy, FHWA





# Delaware's Bayshore Byway APPENDIX





# APPENDIX 3

## DETAILED MAPS OF DELAWARE'S BAYSHORE BYWAY

### MAP INDEX

FIGURE	DISCOVERY ZONE
A-1	.....New Castle
A-2	.....Delaware City
A-3	.....Port Penn
A-4	.....Odessa
A-5	.....Cedar Swamp/Blackbird Creek
A-6	.....Woodland Beach
A-7	.....Bombay Hook
A-8	.....Leipsic
A-9	.....Little Creek
A-10	.....St. Jones Neck



# Delaware's Bayshore Byway APPENDIX



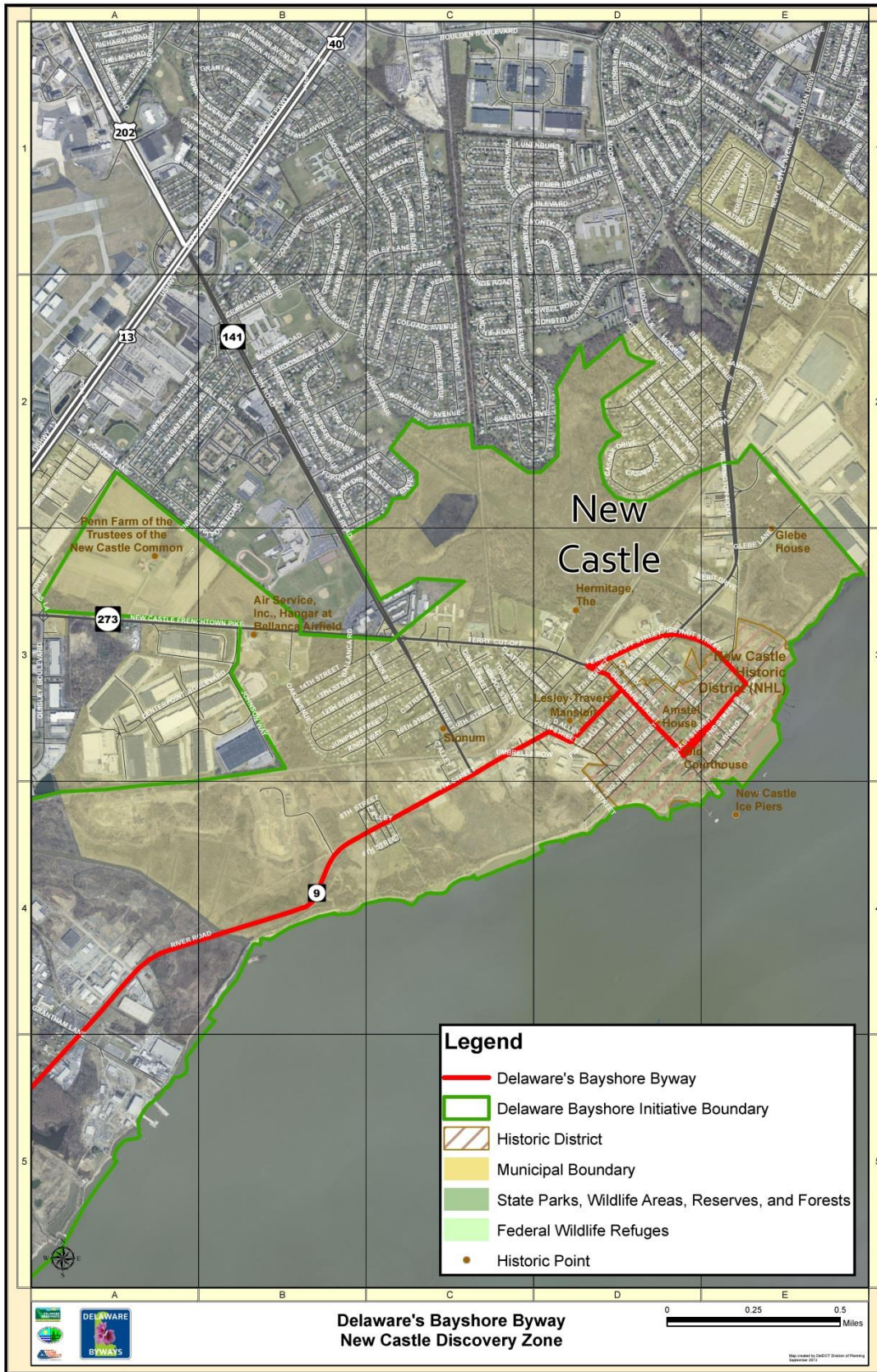


Figure A-1



# Delaware's Bayshore Byway APPENDIX







Figure A-2



# Delaware's Bayshore Byway APPENDIX



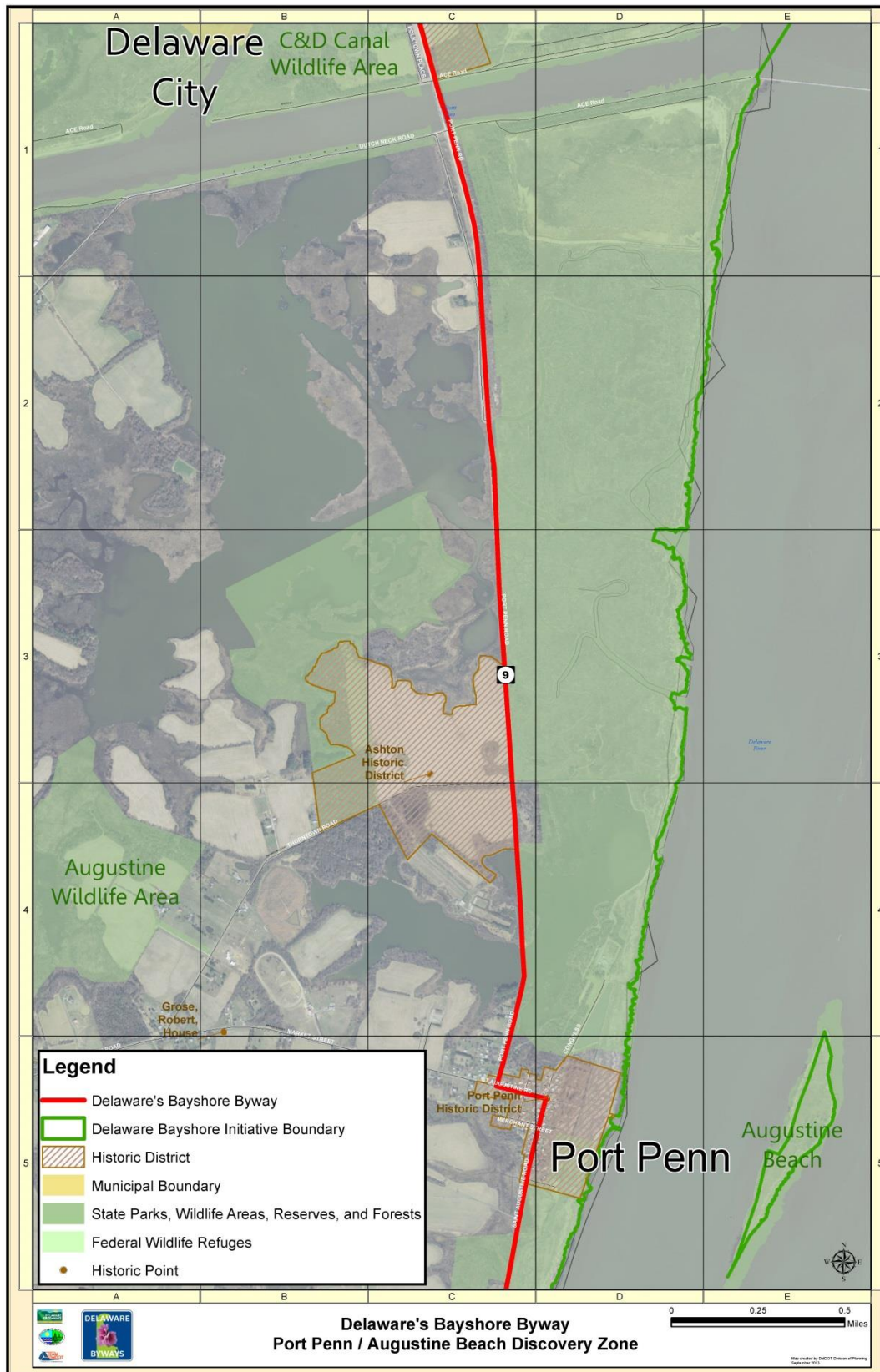


Figure A-3



# Delaware's Bayshore Byway APPENDIX





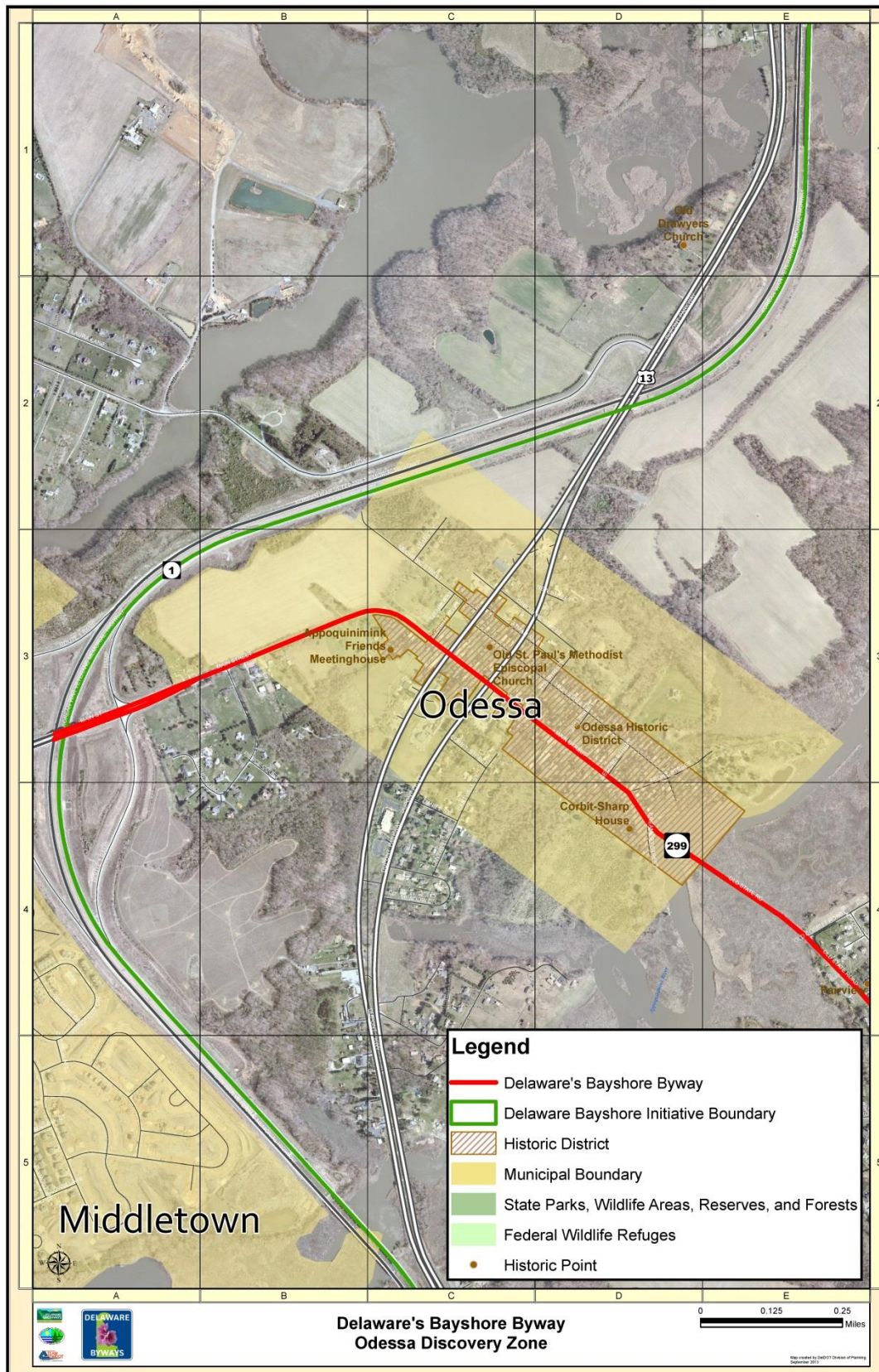


Figure A-4





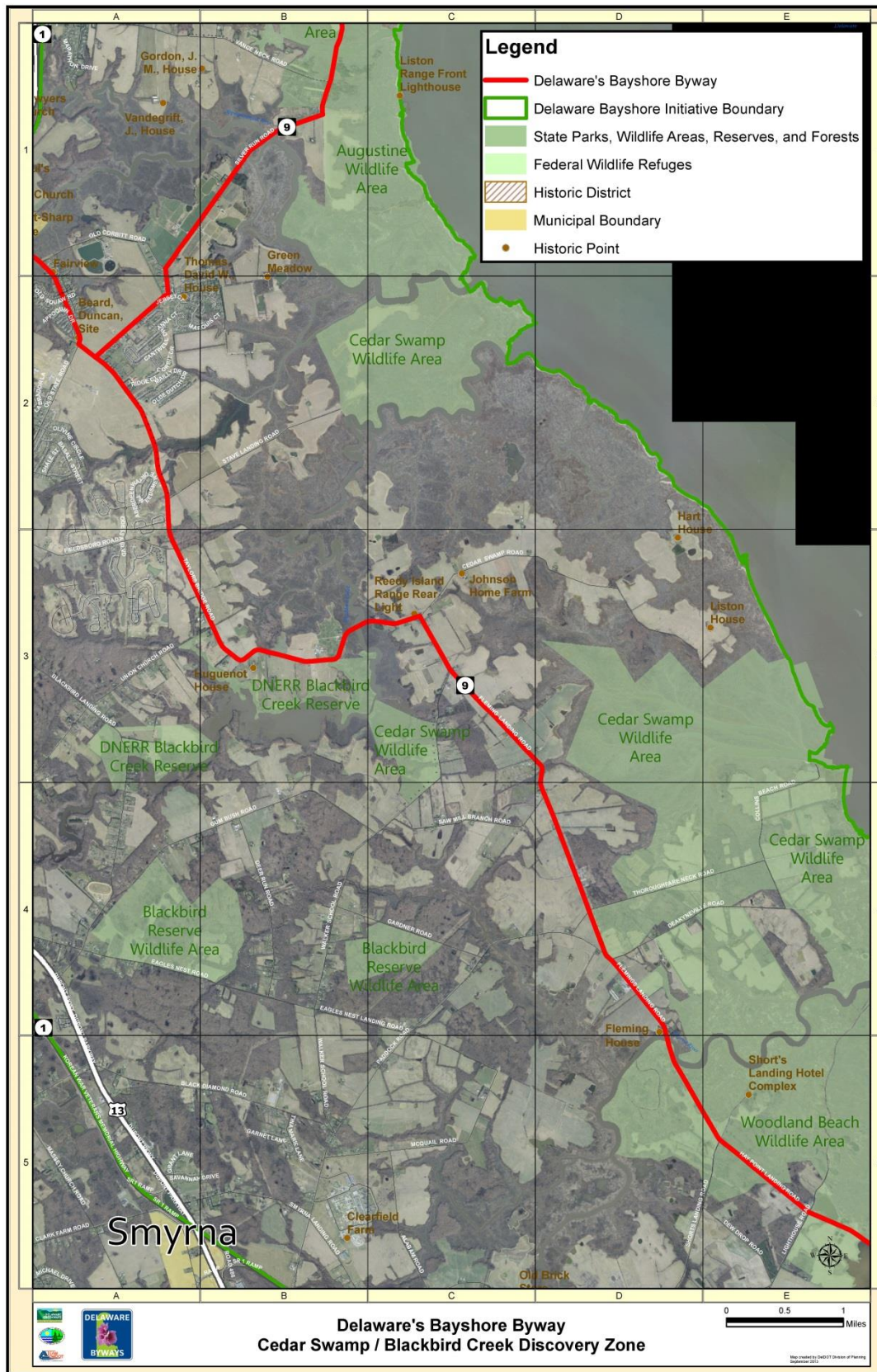


Figure A-5





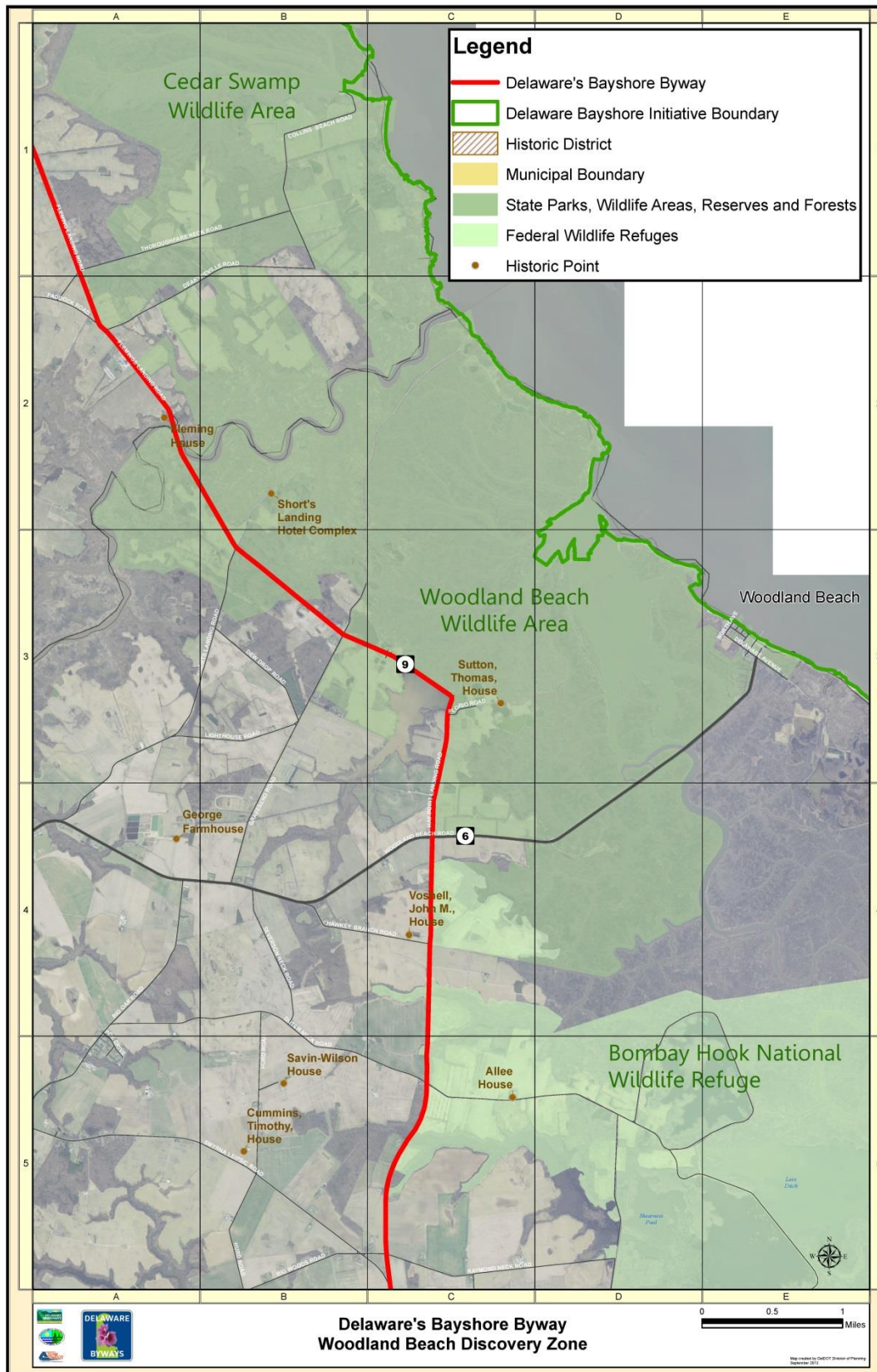


Figure A-6



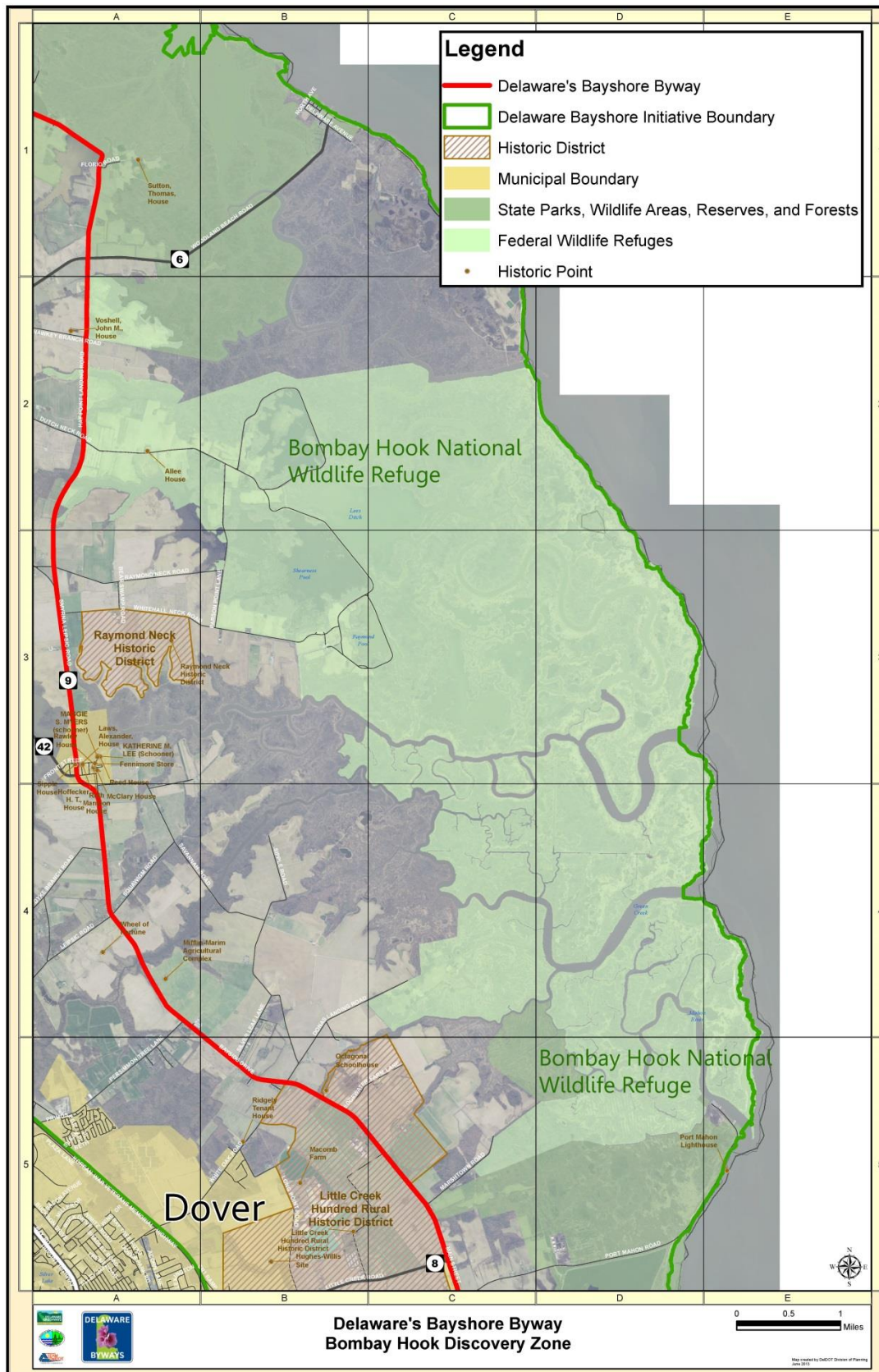


Figure A-7



# Delaware's Bayshore Byway APPENDIX





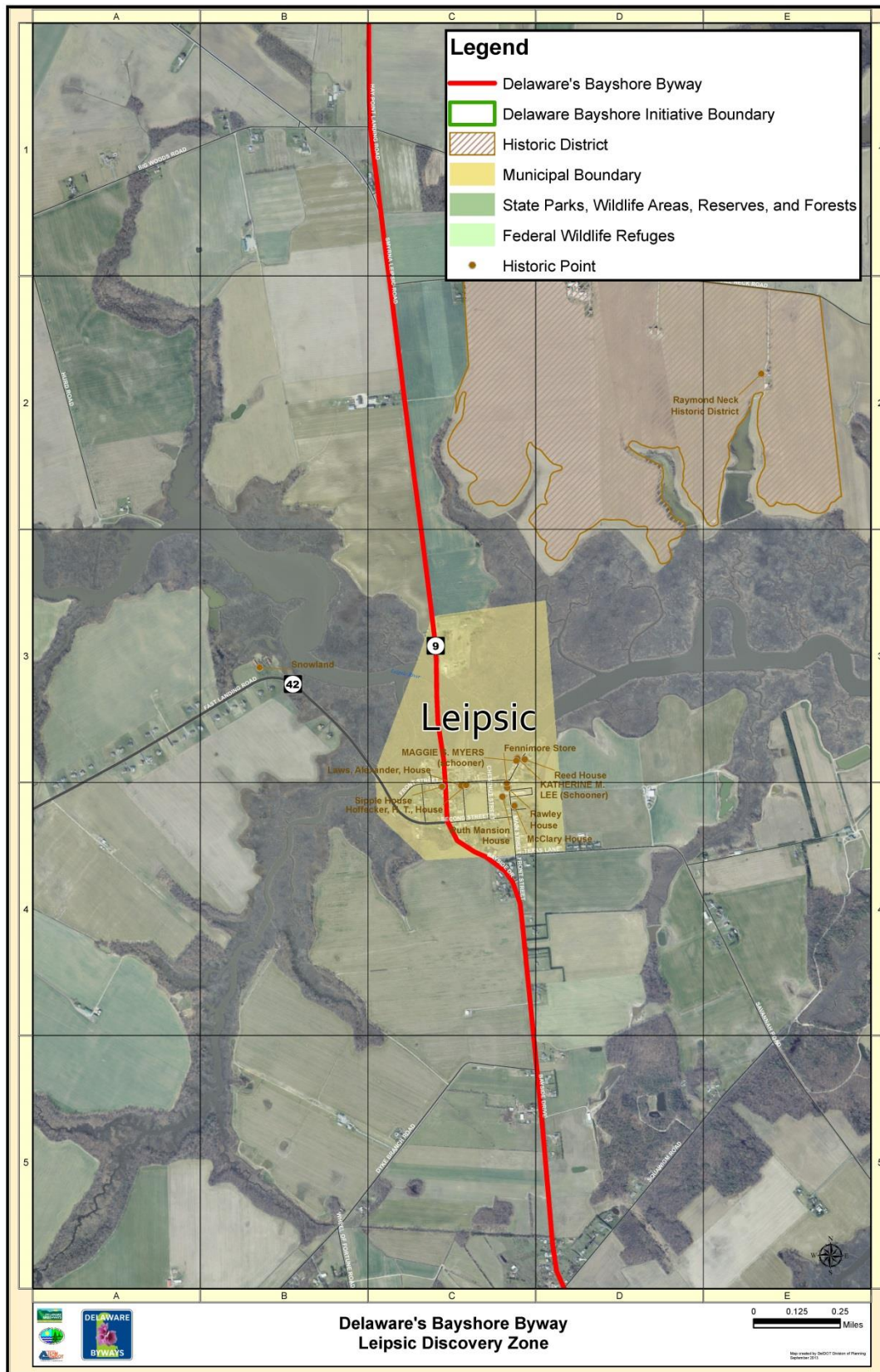


Figure A-8



# Delaware's Bayshore Byway APPENDIX





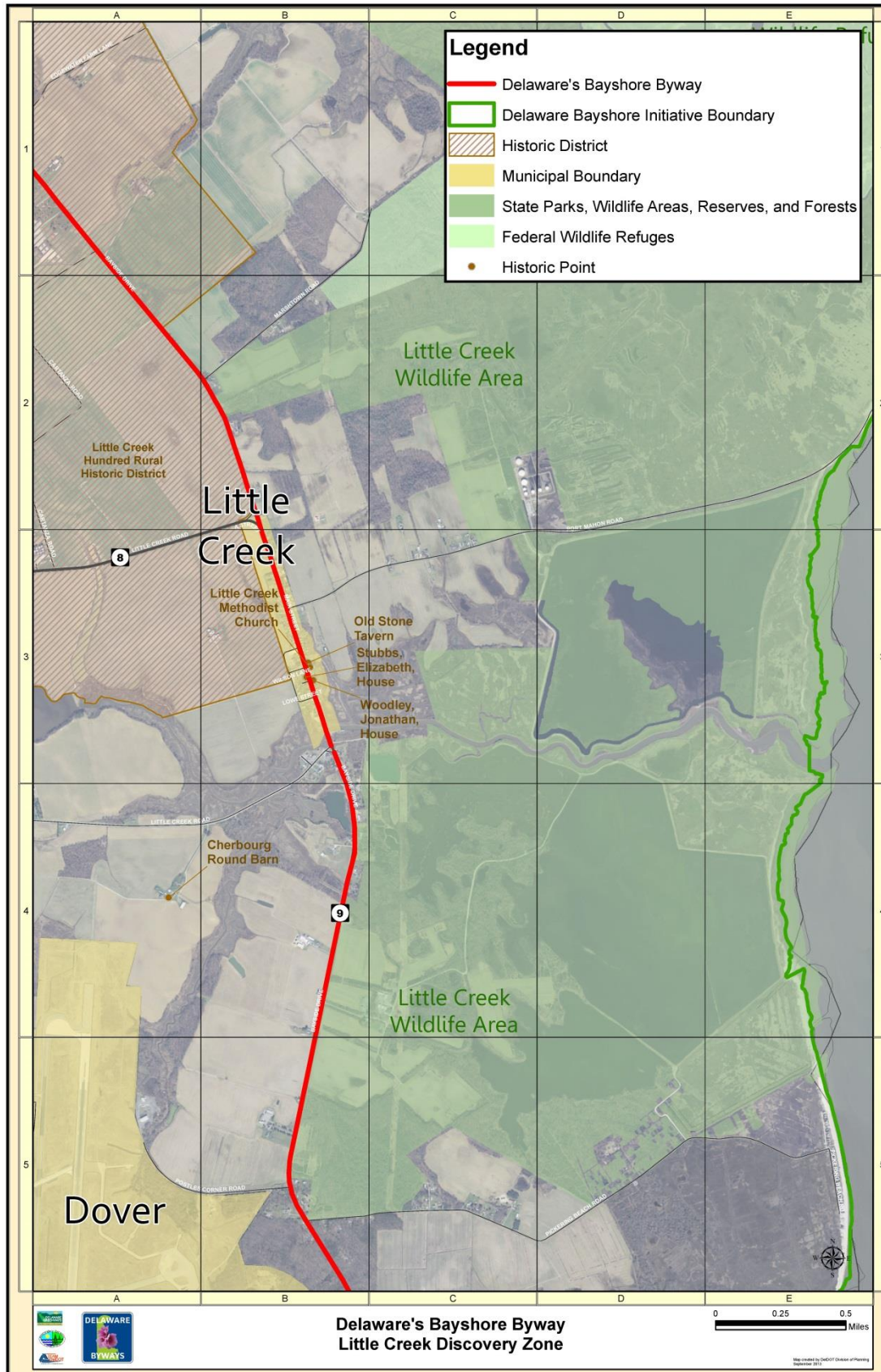


Figure A-9





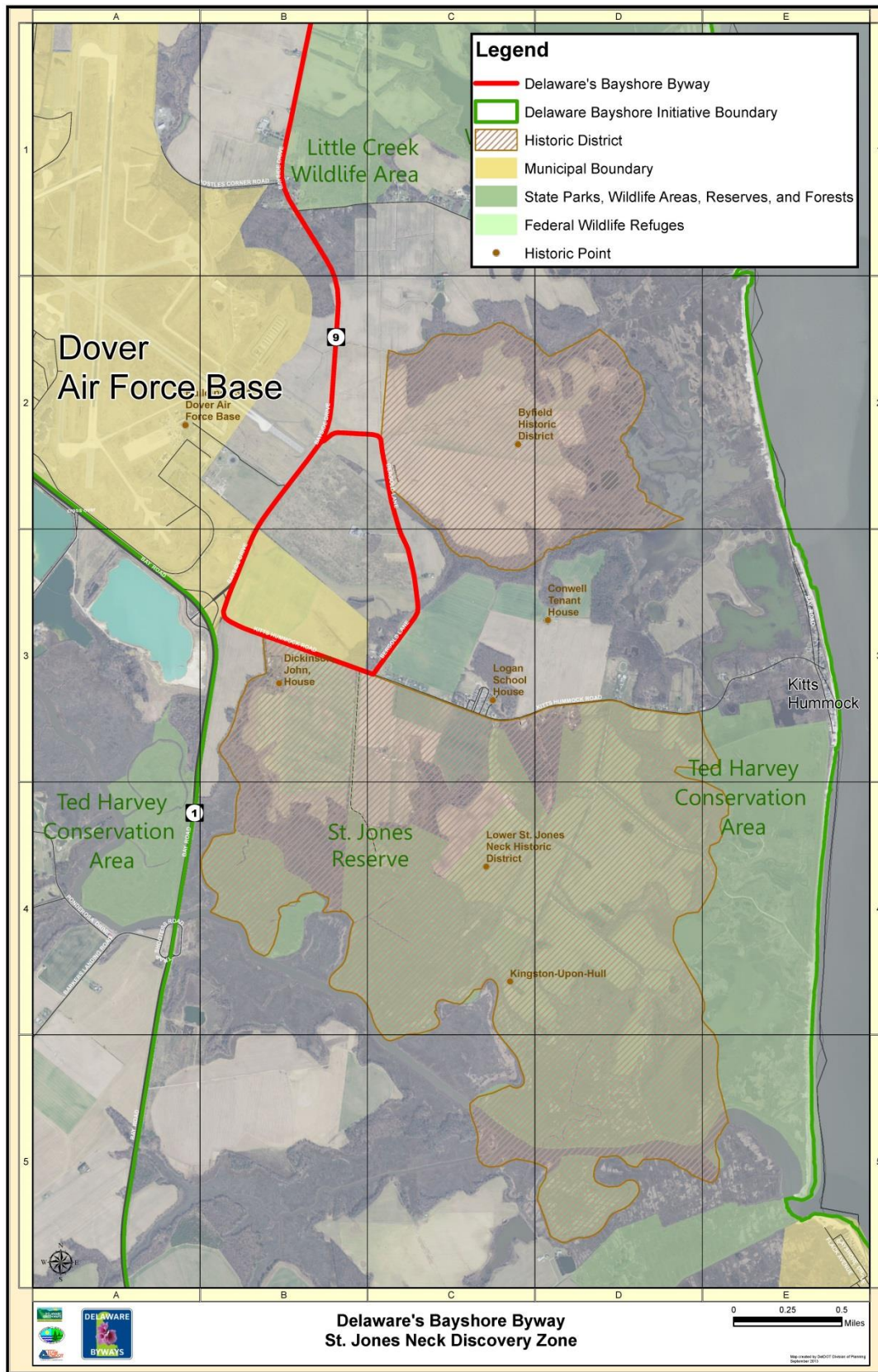


Figure A-10



# Delaware's Bayshore Byway APPENDIX



## APPENDIX 4

### REVIEW OF SIGNIFICANT PLANNING DOCUMENTS

The following table is a review of significant planning documents that will guide planning for Delaware's Bayshore Byway in the coming years.

Survey Element	Significant Document Review  Key to Symbols  ✓ Plans or actions in support of the byway vision ○ Partial undertaking of plans or actions in support of the byway vision ➤ Other resources that support the byway vision
1. Federal	<ul style="list-style-type: none"> <li>✓ A proposal for the Delaware National Coastal Heritage Park</li> <li>✓ America's Great Outdoors: A Promise to Future Generations Report, February 2011</li> <li>✓ Bombay Hook National Wildlife Refuge Comprehensive Conservation Plan 2013 Update</li> <li>✓ Delaware National Coastal Special Resource Study and Environmental Assessment, November 2008, National Park Service</li> <li>➤ National Wildlife Refuge Visitor Survey 2010/2011, Bombay Hook National Wildlife Refuge</li> </ul>
2. State Regulations	<ul style="list-style-type: none"> <li>○ Delaware's Coastal Zone Act and Regulations Governing Delaware's Coastal Zone</li> </ul>
3. State Plans	<ul style="list-style-type: none"> <li>○ Delaware Strategies for State Policies and Spending, 2010</li> </ul>
4. Master and Regional Plans	<ul style="list-style-type: none"> <li>✓ New Castle County 2012 Comprehensive Plan Update</li> <li>○ Fort DuPont Master Plan</li> <li>○ 2007 Kent County Comprehensive Plan, Adopted October 7, 2008</li> <li>○ Kent County Parks &amp; Recreation Strategic Plan 2011</li> </ul>
5. Town Plans	<ul style="list-style-type: none"> <li>○ City of New Castle Comprehensive Plan 2009 Update</li> <li>○ Delaware City Comprehensive Plan, December 2008 to be updated in 2013</li> <li>✓ Delaware City Eco-Tourism Project: Draft Ecological Assessment and Restoration Concept Report</li> <li>✓ Fort DuPont Master Plan 2012</li> <li>○ Leipsic Comprehensive Plan 2006</li> <li>○ Little Creek Comprehensive Plan 2006</li> </ul>

Survey Element	Significant Document Review
6. Environmental Resource Plans, Reports and Regulations	<p><b>Key to Symbols</b></p> <ul style="list-style-type: none"> <li>✓ Plans or actions in support of the byway vision</li> <li>○ Partial undertaking of plans or actions in support of the byway vision</li> <li>➤ Other resources that support the byway vision</li> </ul> <ul style="list-style-type: none"> <li>✓ Delaware Wildlife Action Plan 2007-2017, DNREC</li> <li>✓ Blackbird Creek Reserve, Ecological Restoration Master Plan, March 2007</li> <li>➤ Partnership for the Delaware Estuary and Delaware Bay Estuary Project</li> <li>➤ Delaware National Estuarine Research Reserve Management Plan 2004-2009</li> <li>✓ Delaware Shorebird Conservation Plan Ver 1.0, 2008</li> </ul>
7. Recreational Plans and Resources	<ul style="list-style-type: none"> <li>✓ Delaware Birding Trail – Map and Guide</li> <li>✓ Delaware State Comprehensive Outdoor Recreation Plan 2009-2011</li> </ul>
8. Historic Preservation Resources and Plans	<ul style="list-style-type: none"> <li>➤ National Cooperative Highway Research Program, Transportation Research Board, Design and Management of Historic Roads</li> <li>✓ Delaware's Historic Preservation Plan 2008-2012</li> <li>✓ City of New Castle Historic Area, Guidelines and Standards Handbook, May 1990</li> </ul>
9. Conservation Easements/ Farmland Preservation	<ul style="list-style-type: none"> <li>✓ Current Situation Report for May 16, 2012, Delaware Agricultural Lands Preservation Foundation</li> <li>➤ Department of Agriculture's Land Preservation Foundation</li> <li>✓ DNREC Conservation Easements within the Byway corridor</li> </ul>
10. Water Resources and Floodplains	<ul style="list-style-type: none"> <li>✓ Delaware City Floodplain Ordinance</li> <li>✓ Sea-level Rise (SLR) Vulnerability Assessment / Adaptation Plan</li> </ul>
11. Economic Development	<ul style="list-style-type: none"> <li>○ Official Economic Development and Business Guide</li> <li>○ NCC Sowing Seeds Growing Jobs Program, Presentation to New Castle County Council</li> <li>➤ The Economics Associated with Natural Areas in the Delmarva Peninsula.</li> <li>➤ US Fish and Wildlife Service National Survey of Hunting, Fishing and Wildlife-Associated Recreation – Delaware 2011</li> <li>✓ Economic Value of the Delaware Estuary Watershed 2011</li> </ul>
12. Sign Ordinance/ Billboard Control	<ul style="list-style-type: none"> <li>✓ Delaware Scenic &amp; Historic Highways Program Guide, DelDOT</li> </ul>
13. Transportation	<ul style="list-style-type: none"> <li>✓ New Castle County Bicycle Map, DelDOT 2011</li> <li>✓ Kent County Bicycle Map, DelDOT 2011</li> <li>○ Delaware River and Bay Authority, Strategic Plan and Capital Improvement Program</li> <li>➤ New Castle Industrial Track Trail SR 273 (Delaware Street) Crossing Report, DelDOT, June 21, 2012</li> <li>➤ Finding of No Significant Impact, Chesapeake and Delaware (C&amp;D) Canal Trail Project and C&amp;D Trail Phasing Map</li> <li>✓ Delaware City Transportation Plan</li> <li>○ New Castle County Transportation Plans</li> </ul>





DELAWARE'S BAYSHORE BYWAY

